

English

# RENGO

Let's go forward together  
in all kinds of work

2026-27



## Message from the President

After having been stagnant for about three decades, Japan's wages have begun to rise gradually due to the "Spring Labour Offensive to Create the Future" that we have been engaged in over the last four years. We must now ensure that wages, economy, and prices that have begun to move are placed on a stable track from which they will not return to a deflationary economy and will be firmly situated there to lead Japan's economy and society on to a new stage.

At the same time, however, real wages are continuing to trend downward due to the sudden rise in prices, making it difficult for people to feel any sense of prosperity in daily life. When people lose their sense of financial comfort, they become preoccupied with sustaining their daily lives, leaving them with less room to feel compassion for others. It is precisely at times like these that we at RENGO uphold our vision, "A Secure Society based on Work: Protecting, Connecting, and Creating," and advance various initiatives with the determination to be a trusted, and supportive presence—standing by, moving forward with, and closely connected to all working people and citizens.

Moreover, to push forward powerfully with these initiatives, it is necessary to bring about a further mobilization of colleagues who share our aspirations, and to enhance our organizational ability. Unfortunately, the number of new RENGO members has been declining in recent years. We will position organizational expansion as our primary challenge, ensuring that every initiative contributes to this goal, and will strive to bring even one more colleague into the RENGO community.

Furthermore, the understanding, empathy, and participation of every individual are indispensable to maximize the organizational abilities of our colleagues. For this reason, we will also simultaneously work to build an organization that ensures psychological safety.

Let us take bold action toward a secure society where colleagues support each other and experience a sense of abundance! We at RENGO will continue to walk side by side with working people.



President, JTUC-RENGO

Tomoko Yoshino

## INDEX

Message from the President.....	01	A Secure Society Based on Work.....	09
What are trade unions and RENGO ? ...	02	Action Policies .....	11
Mission/RENGO Principles .....	03	Major Event in RENGO's History .....	13
Leadership .....	05	Affiliates .....	15
Headquarter .....	06	Locals .....	17
Organization Chart .....	07	Related organizations.....	18

---



### What are trade unions and RENGO ?

## A movement that is “always by your side,” standing together with all working colleagues

Trade unions engage in wide-ranging efforts, from resolving workplace issues—such as maintaining and improving working conditions and the workplace environment—to addressing social challenges related to labour-related laws and systems, social security, and economic policy. As a movement that is “always by your side” with all working colleagues, trade unions play a vital role in transforming workplaces, industries, and society.

## RENGO is aiming for “A Secure Society based on Work”

Formed in 1989, RENGO is the Japanese National Center. RENGO has roughly seven million members. Aiming for “A Secure Society based on Work,” RENGO implements activities to protect the employment and livelihoods of all working people.

JTUC-RENGO  
Official Mascot Character  
**UNIONION**

I am UNIONION, RENGO  
PR Ambassador!  
My name “UNIONION” is  
combination  
of “Union” and “Onion”  
whose etymology is  
“unity” in Latin language.



## Mission

1

We have inherited the tradition of free and democratic trade union movements. We will support the collective action of workers and the advancement of trade union movements according to the principles of this tradition.

2

We will constantly seek social justice, arm ourselves with power and policy, and realize achievement of full employment, establishment of basic labour rights, improvement work conditions, and better quality of life for citizens.

3

We will unfalteringly hold hopes for a better future, be leaders of the populace, and build a free, fair, just, and peaceful society.

4

We will work to maintain the independence of trade unions, eliminate all outside control and intervention, establish a solid democratic framework, and work to strengthen and advance the Japanese Trade Union Confederation.

5

We are deeply aware of responsibility of the Japanese trade union movement to global trade union movement. We will strive to achieve world peace and the mutual prosperity of all peoples.

## RENGO Principles

### Article 1

We will maintain high motivation and ethics expected as a leader of the trade union movement and act, to realize the society that is the goal of “RENGO’s Path”.

### Article 2

We will advance our activities from the perspective of union members, which will be supported by all workers and citizens.

### Article 3

We will conduct fair and transparent management such as democratic decision-making, appropriate accounting and financial management, modern operation of secretariat, and trusted activities, in accordance with laws and social rules as well as our own rules and regulations.

### Article 4

We will promote activities to make enterprises and employers fulfill their social responsibility without overlooking their impropriety and unfairness.

### Article 5

We will respect human rights and not discriminate based on factors such as race, gender, physical traits, age, beliefs, or lineage, nor allow such discrimination to occur.

## Article 6

We will promote active disclosure of information to union members and the wider community, and we will strive to protect personal information.

## Article 7

We will engage in a wide range of social activities which will contribute to local and international society, such as peace, human rights, welfare, the environment, education and safety related activities, with an awareness of being a member of society.

### Preamble (excerpt)

Trade unions are organizations that play the role of checking the actions of management and pursue social justice. Trade unions must ensure that their actions and management are modern, fair, and transparent, based on laws and social rules, and that they are trusted by members, non-members, and broader society in order to promote these aims.

We aim to build a movement and organization to be able to adequately fulfil our responsibility and role as the Japanese national center in accordance with these RENGO Principles.

(Established during the 9th RENGO Biennial Convention on 6 October 2005)

## Annual Actions



# Leadership



**Tomoko YOSHINO**  
President  
JAM



**Tomoko NAGASHIMA**  
Deputy President  
UA ZENSEN



**Chihiro ISHIGAMI**  
Deputy President  
JICHIRO



**Masashi JIMBO**  
General Secretary  
DENKI RENG0

## Vice Presidents

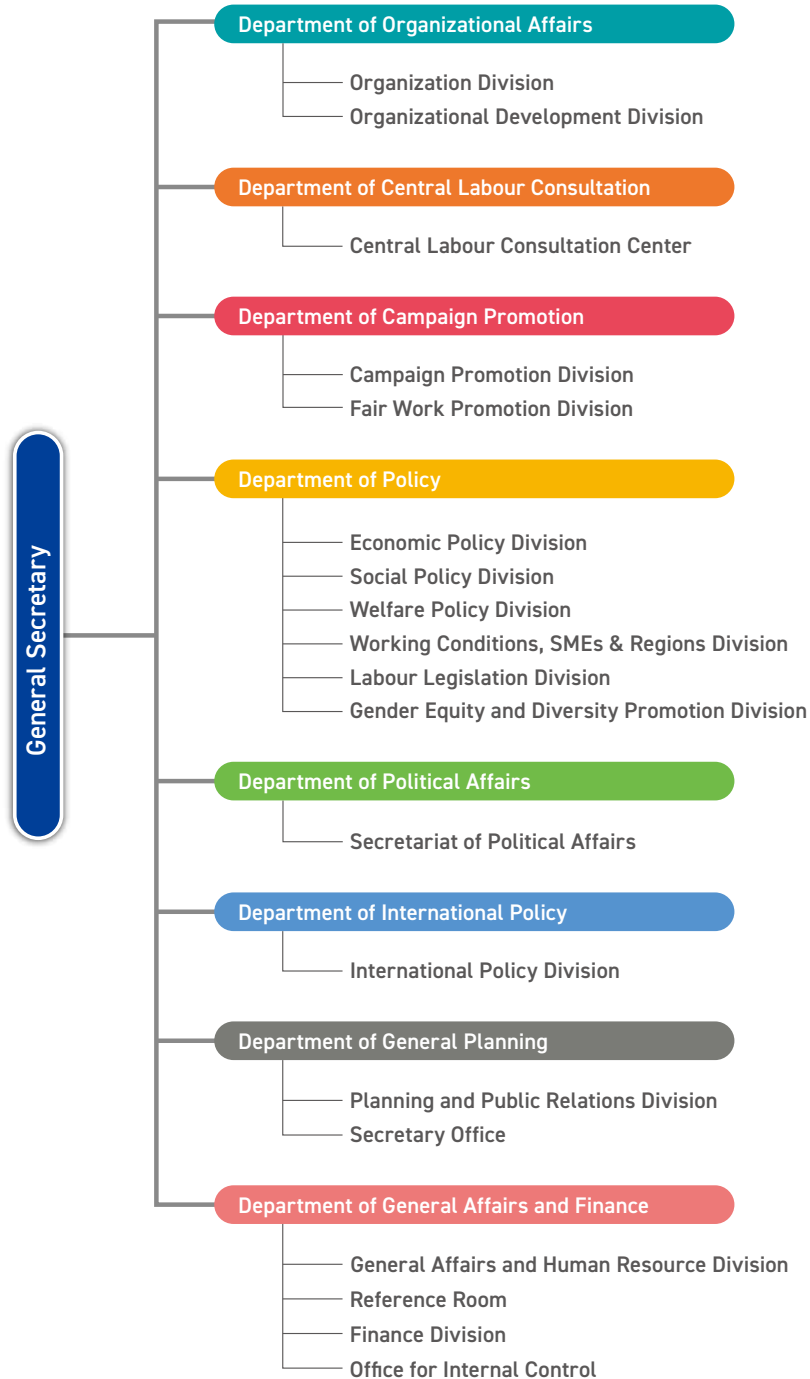
Akihiro KANEKO	JIDOSHA SOREN	Mikiko OKATA	JOHO ROREN
Hidehiro KONDO	DENKI RENG0	Takashi KAJIWARA	NIKKYOSO
Katahiro YASUKOCHI	JAM	Minako KOBAYASHI	NIKKYOSO
Masao TSUMURA	KIKAN ROREN	Shunji HORITANI	JEC RENG0
Nobuko KESAMARU	KIKAN ROREN	Yukitaka NARITA	UNYU ROREN
Masami ADACHI	JP ROUSO	Akihiro TSUZAKI	FOOD RENG0
Moriya MIBU	DENRYOKU SOREN	Asuka SAKURADA	SERVICE RENG0
Shinichi KITANO	JOHO ROREN		

## Assistant General Secretaries

Sakae OGUMA	UA ZENSEN	Yuko TOMITAKA	DENKI RENG0
Tamayo TOMITA	JIDOSHA SOREN	Yasuhiro NAITO	DENRYOKU SOREN
Teppey HAYASHI	JICHIRO		

as of October 2025

# Headquarter



# Organization Chart

Japanese trade unions are in the three-layer structure consisted of enterprise-based unions, industrial federations, and national center. 47 Industrial federations are affiliated to RENGO, and there are 47 RENGO locals.

In global trade union movement, RENGO is affiliated to ITUC and playing an important role in solving global issues such as achievement of SDGs goals and protections of workers' rights.

## International Organizations

### Global Union Federations (GUFs)

A Global Union federation is an international confederation of national or regional trade unions organized in specific sectors or for particular occupational groups, which is working closely with ITUC. There are currently 9 GUFs.

### Enterprise-based unions (unit unions)

Working on improvements of working conditions, monitor corporate activities, and providing various services to the members through collective bargaining and labour-management consultation in the workplace.

### Enterprise-based Unions



Union Members

### Industrial Federations



### Industrial Federations (RENGO Affiliates)

Affiliated by enterprise-based unions (unit unions), working on improvement of working conditions which affects the entire industry and realization of industry policy.

### Convention

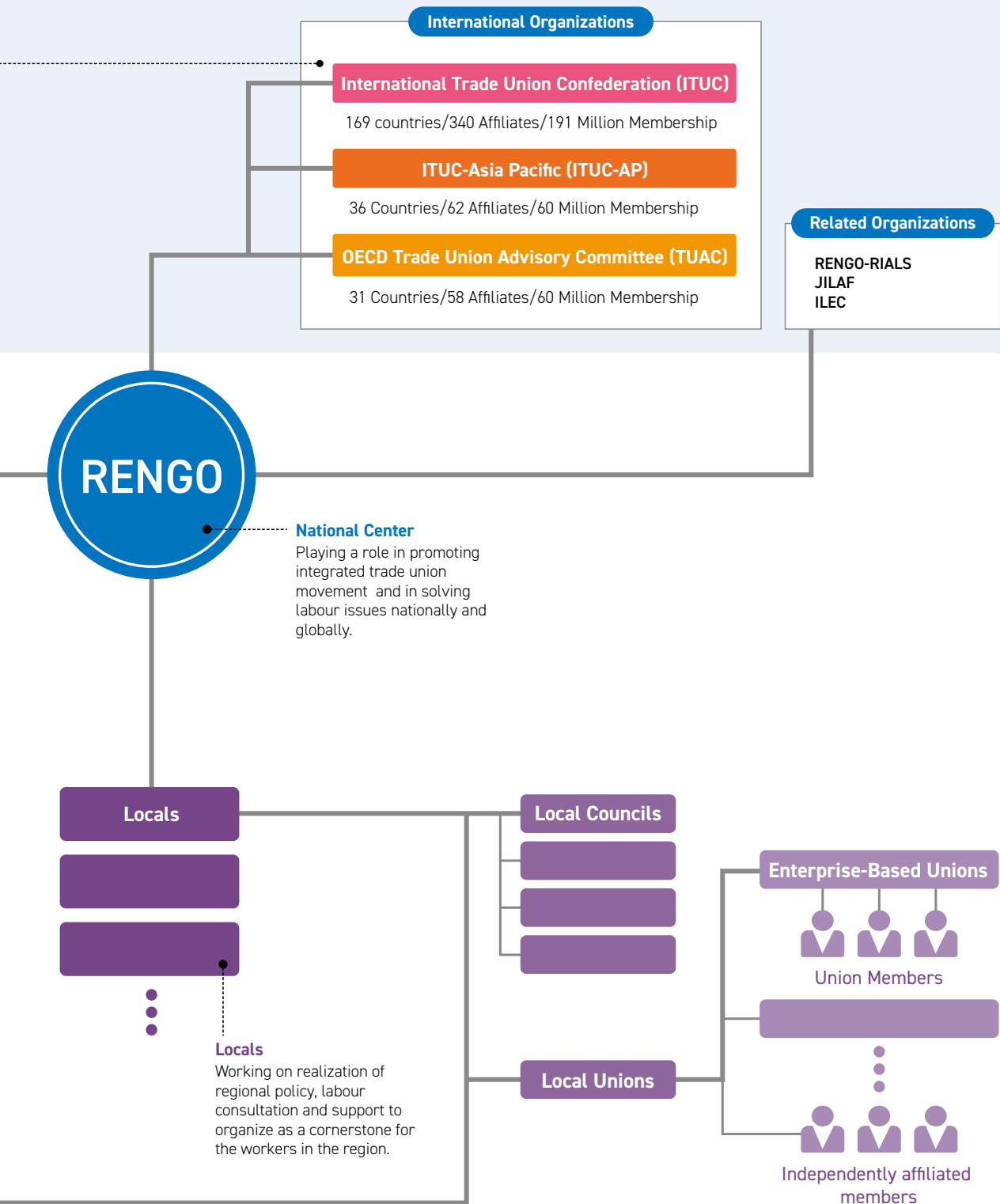
### Central Committee

### Special Committee

### Central Executive Committee

### Technical Committee





# A Secure Society Based on Work

- Protecting, Connecting, and Creating

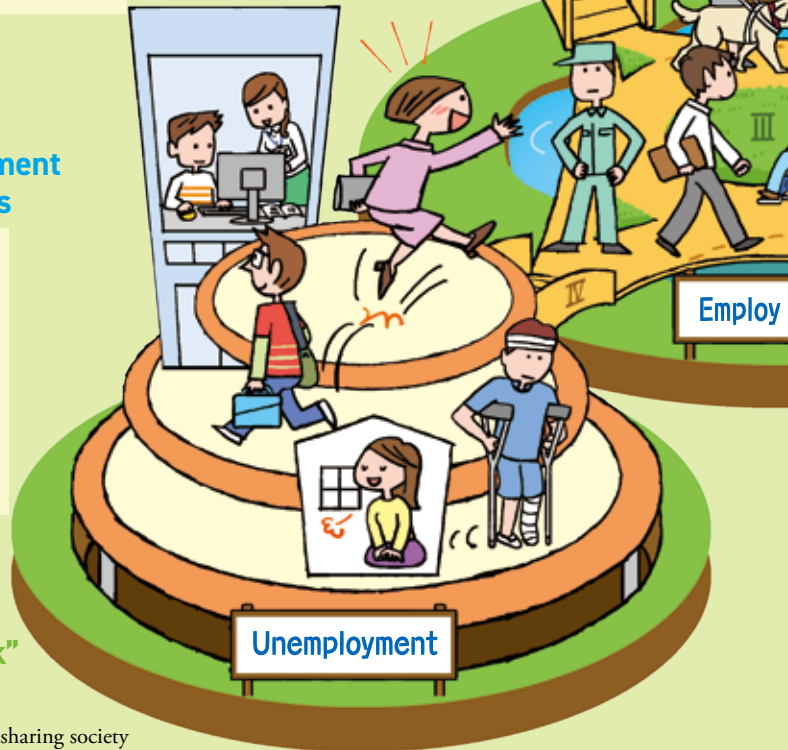
## Bridge I Connect Education and Work

- Guarantee the opportunity for education to all children
- Free education
- Promote an inclusive education system to all children
- Promote labour education and citizenship education
- Enhance the education developed by solidarity and mutualism
- Improve an environment for smooth transition from education to employment
- Develop an environment where people can keep studying throughout life time



## Bridge IV Connect Unemployment to Job Opportunities

- Develop integrates strategies for job training, fair evaluation, and job matching
- Make employment insurance and social insurance available to all workers
- Enhance support for unemployed and less experienced workers
- Establish “Life Security Entitlements” system
- Ensure access to housing and healthcare, which are essential for independence



## Foundation

### Support for “A Secure Society Based on Work”

- Establish a fair and reliable government
- Strengthen income redistribution system and realize sharing society
- Promote CSR to be carried out and deepen the “Productivity Movement”
- Create green and decent industries and jobs, and realize sustainable growth
- Prepare for natural disasters and develop local community for declined, super aging population with low birth rate

Foun

## We will change the Future.

The society we RENO aim is a lively participatory society placing utmost value on work, with social participation through diverse work styles under fair working conditions for all, based on mutually-supported social/economic independence and safety nets that permit self-realization. Furthermore, it is a society founded on “sustainability” and “inclusion,” where diversity is accepted regardless of age, gender, nationality or disability, and where there is mutual recognition and support that leaves no one behind. To realise this society, the Five Secure Bridges that connect to “Work” need to be developed.

### Bridge II Connect Life and Work

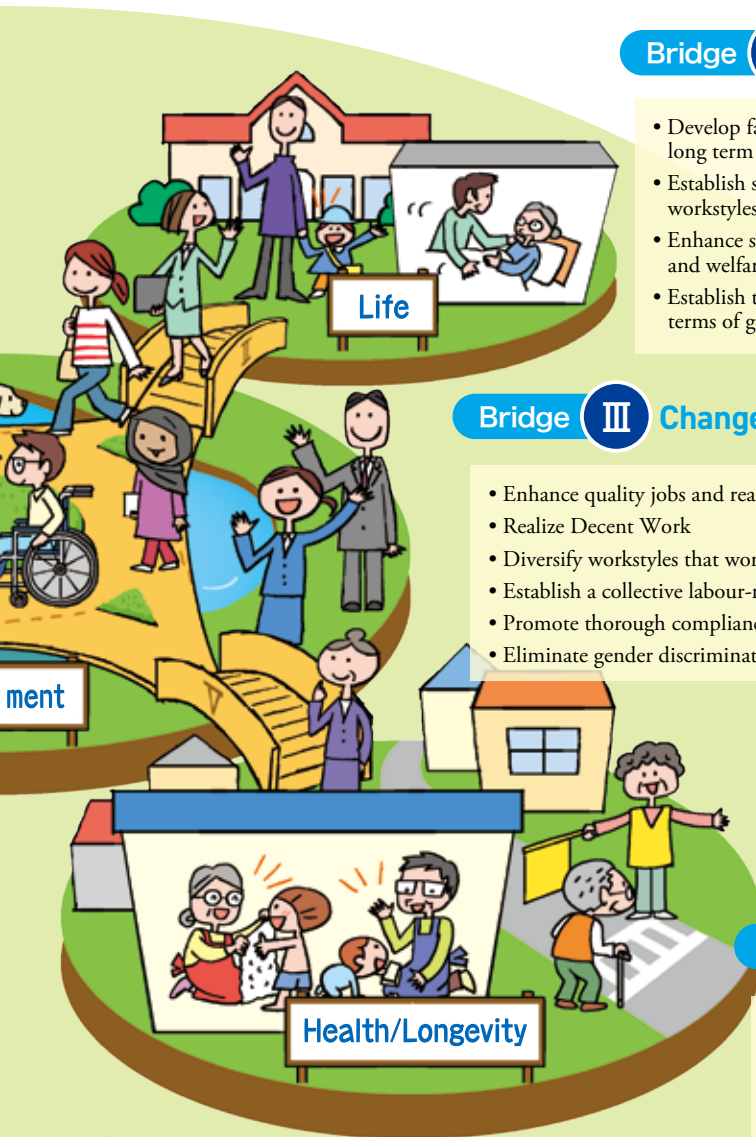
- Develop fair and just work rules, so that people can work for a long term
- Establish society in which people can select the ways of diversified workstyles and lifestyles
- Enhance social security services such as healthcare, long-term care, and welfare, and ensure sufficient human resources
- Establish taxation and social security systems that are neutral in terms of gender, lifestyle, and work arrangements

### Bridge III Change Workstyles

- Enhance quality jobs and realize full employment
- Realize Decent Work
- Diversify workstyles that workers can choose
- Establish a collective labour-management relations system corresponding to diversity
- Promote thorough compliance and develop work rules
- Eliminate gender discrimination, correct wage gap and realize gender equality

### Bridge V Create Healthy and Longevous Society

- Develop a society that everyone can work throughout life time as they wish
- Ensure choices and access to wide-range of “work” such as social contributions
- Develop and enhance secure and reliable income security system
- Promote medical and nursing care security for good health and longevity



dation

# Bold Action for a Secure Society!

## — Expanding the circle of Understanding, Empathy, and Participation —

Amid further increasing uncertainty in the socioeconomic situation, RENGO has made efforts to maintain and create employment, improve wage and working conditions, and strengthen social safety nets. However, rises in wages have failed to keep pace with the rising cost of living, and households continue to face significant financial pressures. The more vulnerable people are, the greater the impact, and we now stand at the crossroads of whether people will be able to maintain hope and peace of mind for the future.

We must further deepen the movement as “always by your side,” standing with all working people and embracing diversity. Bold action is required precisely now that we are on the verge of a great turning point in the socioeconomic situation. We will continue our efforts to expand the circle of “understanding, empathy, and participation” by linking policies and movements, aiming to realize a sustainable and inclusive society where everyone can live a happy and fulfilling life.

# Action Policies 2026-2027

## Priority Area

### 1 To Protect and Connect All Working Colleagues, Organizational Expansion and Strengthening as a Top Priority, Pursue Collective Industrial Relations, and Promote a Movement that Expands Out into Society

1. Deepening of Efforts for Organizational Expansion and Strengthening toward the Realization of the “Organizational Expansion Plan 2030”
2. Building and Strengthening of Collective Industrial Relations that Include Diverse Workers
3. Promoting Initiatives to Connect and Support Working Colleagues and Responding to New Issues
4. Efforts toward the Rejuvenation of SMEs and Local Communities by Making Use of the JTUC-RENGO Platform (Smiles and Energy Platform)
5. By Linking Policies and Movements, Promoting a Movement that Expands Out into Society through a Virtuous Cycle of “Understanding, Empathy, and Participation”



▲ Spring Labour Offensive “RENGO Action”  
Street Appeal Activities



▲ Noto Peninsula Earthquake Volunteer  
Activities

## Areas for Advancement

### 1 Efforts in the Areas of Peace, Human Rights and Contribution to Society by Social Solidarity and Succession to the Next Generation

1. Promoting Mutual-Support and Mutual-Help Movements
2. Promoting Peace Movements
3. Approach to Diversifying Human Rights Issues
4. Strengthening Efforts for Natural Disasters and Formulating a Business Continuity Plan (BCP)
5. May Day Initiatives

### 2 Promotion of Political Participation toward the Realization of Policy

1. Fundamental Principles of Political Participation
2. Substantial Promotion of Political Participation
3. Initiatives for Political Reform Sound Parliamentary Democracy
4. Revitalization of Local Politics

We have restructured our seven movement dominant into three “Priority Areas” and four “Areas for Advancement”. RENG0 headquarter, affiliated organizations, RENG0 locals, and local councils will work together with a sense of unity. (Full text of the Action Policies are available on our official website.



## 2 Promotion of the Movement to Protect and Create a Secure Society and Decent Work

1. Efforts toward an Integrated Reform of Social Security, Education, and the Tax System
2. Promotion of Efforts toward Integrated Solutions to Economic, Social, and Environmental Issues to Realize a Sustainable and Inclusive Society
3. Promotion of Employment and Labour Policies toward the Realization of Decent Work for all Working Colleagues
4. Improvements in Wages and Working Conditions and Strengthening the Base of SMEs, which Support Local Society

## 3 Realization of Workplaces and a Society where “True Diversity”, including Gender Equality, in which Each and Every Person is Respected has Taken Root

1. The Realization of Workplaces and Society in which People can Find a Sense of Worth in Work Regardless of Sex, Age, Nationality, the Existence of Disabilities, Employment Type, etc.
2. Promotion of Equal Participation by Men and Women and Gender Equality, and Efforts toward Parity of Working Conditions and a Work-Life Balance
3. Efforts for the Promotion of “Fair Work”
4. Efforts toward Strengthening of Responses to JTUC-RENG0's Labour Consultations



▲ RENG0's Policy Request Activities



▲ 26th Meeting of ITUC-AP Regional General Council



▲ RENG0 Youth College

## 1 Activities of a Sound Democracy and the

ical Activity  
cal Activities  
to Achieve  
cy

## 3 Advancement of the International Trade Union Movement toward the Realization of Decent Work

1. Establishment and Defense of Human Rights, Trade Union Rights and Democracy
2. Strengthening of Collaboration with International Organizations
3. Initiatives for the Prevention of Labour Disputes and Promotion of Solutions

## 4 Promoting Workers' Education and the Securing and Fostering of Human Resources towards Manifestation of Synergistic Effects between JTUC-RENG0 and Related Organizations

1. Securing and Development of Human Resources that Support RENG0 Movements
2. Utilization of Human Resources and Knowledge in Collaboration with Organizations Related to JTUC-RENG0
3. Promotion of Wide-Ranging Labour Education Inside and Outside Organizations
4. Initiatives for the Development of International Human Resources



# Major Events in RENGO's History

- 1987** Japanese Private Sector Trade Union Confederation (JPTUC-RENGO) inaugurated, unifying private sector trade unions of SOHYO, DOMEI, CHURITSU ROREN, SHIN-SANBETSU and other independent federations.  
**December** RENGO-RIALS (JTUC Research Institute for Advancement of Living Standards) established
- 1989** **May** JILAF (The Japan International Labour Foundation) established  
**November** Japanese Trade Union Confederation (RENGO) inaugurated, achieving the unification between private and public sector trade unions. (78 affiliates with 8 million members)
- 1990** **January** "Labor Consultation Hotline" set up for workers in smaller businesses and part-time workers  
**May** Local RENGOs formed in all 47 prefectures  
**September** "Japanese Archipelago Cleaning Campaign" launched as a nationwide united action
- 1991** **July** "National Campaign for Working Hour Reduction: Relaxation Caravan"  
**September** RENGO Diet Members Council launched  
**November** RENGO held the 2nd Biennial Convention
- 1992** **May** Official dialogue with the All-China Federation of Trade Unions (ACFTU) resumed  
**December** Hosted ICFTU-APRO 15th Regional Congress in Tokyo
- 1993** **May** Mass action, "Let's Go to the Diet to Realize Political Reform", human chain around the Diet building  
**October** RENGO held the 3rd Biennial Convention
- 1994** **July** "RENGO Forum on Policy and Politics" formed  
**December** "Joint Study Group for the Creation of New Industries and Employment" launched in collaboration with Nikkeiren (Japan Federation of Employers' Associations)
- 1995** **Jan.-Mar.** Support activities and fund-raising for victims of the Hanshin-Awaji Earthquake  
**October** RENGO held the 4th Biennial Convention  
**November** ILEC (Institute of Labour Education and Culture) established
- 1996** **February** First overseas showing of "Hiroshima-Nagasaki Atomic Bomb Exhibition" in Paris  
**June** Nationwide united action for gender equality legislation
- 1997** **February** "10-day Sit-in in front of the Diet" held to protest the proposed medical reform plan

- July** "Forum on Women's Participation and Shorter Working Hours" held  
**October** RENGO held the 5th Biennial Convention
- 1998** **January** "Gathering of Smaller Unions - Forum to Rectify Disparities" held  
**October** Walk-in by 10 thousand petitioners to block proposed revisions of the Labor Standards Law
- 1999** **October** RENGO held the 6th Biennial Convention, and ceremony to commemorate 10th Anniversary
- 2000** **Jan.-Mar.** Petition drive of 10 million signatures calling for pension reform, the reduction of healthcare costs and job creation
- 2001** **January** "RENGO Declaration for the 21st Century" announced, aiming at the development of a welfare society centered on labor  
**April** Burma Office Japan established  
**May** Mass action by 10 Million Workers "Breaking through the Crisis of Employment and Workers' Lives: Change the Administration" staged  
**October** RENGO held the 7th Biennial Convention
- 2002** **April** Mass action "We Can No Longer Endure—We Won't be Deceived" staged  
**October** "Citizens Congress to Support Part-Time Workers: Fair Treatment for Part-Time Workers!" formed
- 2003** **October** RENGO held the 8th Biennial Convention  
**November** Nationwide campaign to eliminate unpaid overtime launched
- 2004** **October** Relief activities and fund-raising for the Mid-Niigata Prefecture Earthquake implemented  
**December** Hosted ICFTU 18th World Congress in Miyazaki
- 2005** **Jan.-Apr.** Signature-collection campaign aimed at the 2005 Review Conference on the Parties to the Treaty on NPT  
**May** "Action calling for Nuclear Disarmament at UN General Assembly Hall" organized  
**August** "Campaign to oppose a tax increase targeted at employed workers" launched  
**October** RENGO held the 9th Biennial Convention
- 2006** **January** "Simultaneous nationwide campaign to oppose a tax increase targeted at employed workers" started  
**June** "TOKYO Rally to correct disparities" held

**2007** **Jan.-Feb.** Public Dialogues on correcting disparities held nationwide  
**October** The Department of Non-Regular Employment established at the HQ  
 RENGU held the 10th Biennial Convention

---

**2008** **October** "World Day for Decent Work" rally

---

**2009** **March** "Tripartite Agreement for the Realization of Employment Stability and Job Creation" signed  
**May** "Urgent Rally to free Daw Aung San Suu Kyi and other democratic activists" held  
**August** Change of government following the Democratic Party of Japan (DPJ) historic victory in the general election  
**October** RENGU held the 11th Biennial Convention

---

**2010** **December** Published proposals on "Towards a 'Secure Society based on Work'", the image of society Japan should aim

---

**2011** **March** The Great East Japan Earthquake hit; RENGU sent volunteer workers to the affected areas  
**October** RENGU held the 12th Biennial Convention

---

**2012** **January** "RENGU Town Meetings: for a secure society based on work" held  
**May** Plan for "RENGU with 10 million members" endorsed  
**December** Coalition government of LDP and Komeito formed

---

**2013** **April** "STOP unequal society! Campaign for a better living" launched  
**October** RENGU held the 13th Biennial Convention

---

**2014** **March** Burma Office Japan closed  
**Sep.-Dec.** Relayed campaign traveling through all prefectures of Japan against deregulation of worker's protection

---

**2015** **April** Institute for Solidarity-based Society of Hosei University(ISS-HU) commonly known as "RENGU Graduate School" launched  
**August** Big rally and surround the Diet by chain of 14000 people with the strong voice, "No to current administration"  
**October** RENGU held the 14th Biennial Convention

---

**2016** **Apr.-May.** The Kumamoto Earthquake hit; Rengo supported volunteer activities and fund-raising  
**August** Conducted Japan's first workplace awareness survey on LGBT

---

**2017** **September** "Labour-Management Symposium for Work Style Reforms" was co-hosted by RENGU and major 4 economic organizations  
**October** RENGU held the 15th Biennial Convention

---

**2018** **June** Nationwide campaign in response to Work Style Reform Laws launched  
**July** Torrential Rain Disaster wreaked havoc in western Japan: RENGU supported volunteer activities and fund-raising  
**November** First labour consulting service through SNS (LINE)

---

**2019** **October** RENGU held the 16th Biennial Convention  
 "RENGO Action" started  
 RENGU Headquarters for Response to Typhoon Hagibis established, fund-raising and volunteer activities developed

---

**2020** **March** Initiative developed for employment, economic and livelihood support measures regarding the coronavirus crisis  
**April** 100th year of May Day in Japan  
**Jul.-Sep.** Dialogues with the government on labour policy regarding the coronavirus crisis  
**October** "Wor-Q" website launched for resolving freelancer issues

---

**2021** **June** 30% female participation rate reached at RENGU's 85th Central Committee Meeting  
**October** Labour-consultation chatbot "UniBo" launched  
 RENGU held the 17th Biennial Convention

---

**2022** **November** First ITUC President from RENGU elected at the 5th ITUC World Congress

---

**2023** **Jan.-Feb.** RENGU Immediate Action ("National Caravan" Campaign) & Parade  
**October** RENGU held the 18th Biennial Convention

---

**2024** **Jan.-Jul.** Set up a Noto Peninsula Earthquake Response Headquarters and conducted fund-raising and volunteer activities  
**August** Established a "JTUC-RENGU Freelance Workers' Compensation Insurance Center"  
**November** Began accepting applications for "Furihoke," a special compensation insurance program for freelance workers

---

**2025** **March** Held a talk with the Brazilian President Lula  
**April** Government-Labour Conference held for the first time in 16 years  
**August** Submitted a petition demanding the realization of the Optional Separate Surnames System for Married Couples"  
**October** RENGU held the 19th Biennial Convention

---

## 01. UA ZENSEN

The Japanese Federation of Textile, Chemical, Food, Commercial, Service, and General Worker's Unions



## 02. JIDOSHA SOREN

Confederation of Japan Automobile Workers' Unions (JAW)



## 03. JICHIRO

All-Japan Prefectural and Municipal Workers Union



## 04. DENKI RENGU

Japanese Electrical Electronic & Information Union



## 05. JAM

Japanese Association of Metal, Machinery and Manufacturing Workers



## 06. KIKAN ROREN

Japan Federation of Basic Industry Workers' Unions (JBU)



## 07. SEIHO ROREN

National Federation of Life Insurance Workers' Unions



## 08. JP ROUSO

Japan Postal Group Union



## 09. DENRYOKU SOREN

The Federation of Electric Power Related Industry Workers' Unions of Japan



## 10. JOHO ROREN

The Federation of Information and Communication Technology Service Workers of Japan



## 11. NIKKYOSO

Japan Teachers' Union (JTU)



## 12. JEC RENGU

Japan Federation of Energy and Chemistry Workers Unions



## 13. UNYU ROREN

All Japan Federation of Transport Workers' Unions



## 14. FOOD RENGU

Federation of All Japan Foods and Tobacco Workers' Unions (JFU)



## 15. SHITETSU SOREN

General Federation of Private Railway & Bus Workers' Unions of Japan



## 16. SOMPO ROREN

Federation of Non-Life Insurance Workers' Unions of Japan (FNIU)



## 17. JR RENGU

Japan Railway Trade Unions Confederation (JRTU)



## 18. KOKKO RENGU

Japan Public Sector Union



## 19. KOKU RENGU

Japan Federation of Aviation Industry Unions (JFAIU)



## 20. KAIIN KUMIAI

All Japan Seamen's Union (JSU)



## 21. GOMU RENGU

Japanese Rubber Workers' Union Confederation



## 22. KOTSU ROREN

Japan Federation of Transport Workers' Unions (JFT)



## 23. SERVICE RENGU

Japan Federation of Service & Tourism Industries Workers' Unions



## 24. ZEN DENSEN

Japan Federation of Electric Wire Workers' Unions (JEWU)



## 25. KAMIPA RENGU

Japanese Federation of Pulp and Paper Workers' Unions



## 26. ZENKOKU GAS

The Federation of Gas Workers' Unions of Japan





## 27. INSATSU ROREN

Federation of  
Printing Information Media Workers' Unions



## 28. CERAMICS RENO

All Japan Federation of Ceramics Industry Workers

## 29. ZEN SUIDO

All-Japan Water Supply Workers' Union



## 30. JR SOREN

Japan Confederation of Railway Workers' Unions  
(JRU)



## 31. ZENJIRO ROREN

National Federation of  
Automobile Transport Workers Unions



## 32. ZENKOKU NODANRO

National Federation of Agricultural, Forestry and Fishery



## 33. MEDIA ROREN

Japan Federation of Media, Advertising,  
Motion picture, and Theater Labor Unions

## 34. ZEN ROKIN

Federation of Labour Bank Workers Unions of Japan



## 35. HEALTH CARE ROKYO

Japanese Health Care Workers' Union



## 36. ROKYO ROREN

Confederation of Labour Supply Trade Unions



## 37. ZENKOKU UNION

Japan Community Workers Union Federation

## 38. ROSAI ROREN

Federation of ZENROSAI Trade Unions



## 39. SINRIN ROREN

Japanese Federation of Forest and Wood Workers Union



## 40. ZEN INSATSU

All Printing Bureau Labour Union



## 41. JICHI ROREN

National Federation of Prefectural and  
Municipal Workers' Unions

## 42. ZENKOKU KEIBA RENO

National Federation of Horse-racing Workers

## 43. KOUN DOMEI

Japanese Confederation of Port and  
Transport Workers' Unions

## 44. JA RENO

All Japan Agriculture Cooperative Staff Members' Union

## 45. ZEN ZOHEI

All Mint Labour Union

## Associated Organizations

## 46. YAKUSYO RENO

Japanese Federation of Pharmaceutical and  
Cosmetic Industry Worker's Unions



## 47. NIKKOKYO

Japan Senior High School Teachers Union (JSTU)

as of October 2025

# Locals

47 Locals in  
47 Prefectures (Regions)

## HOKKAIDO BLOC

Hokkaido

## HOKURIKU BLOC

Niigata  
Toyama  
Ishikawa  
Fukui

## KINKI BLOC

Shiga  
Kyoto  
Nara  
Wakayama  
Osaka  
Hyogo

## TOHOKU BLOC

Aomori  
Iwate  
Akita  
Yamagata  
Miyagi  
Fukushima

## CHUGOKU BLOC

Tottori  
Shimane  
Okayama  
Hiroshima  
Yamaguchi

## KANTO BLOC

Gunma  
Tochigi  
Ibaraki  
Saitama  
Chiba  
Tokyo  
Kanagawa  
Yamanashi

## TOKAI BLOC

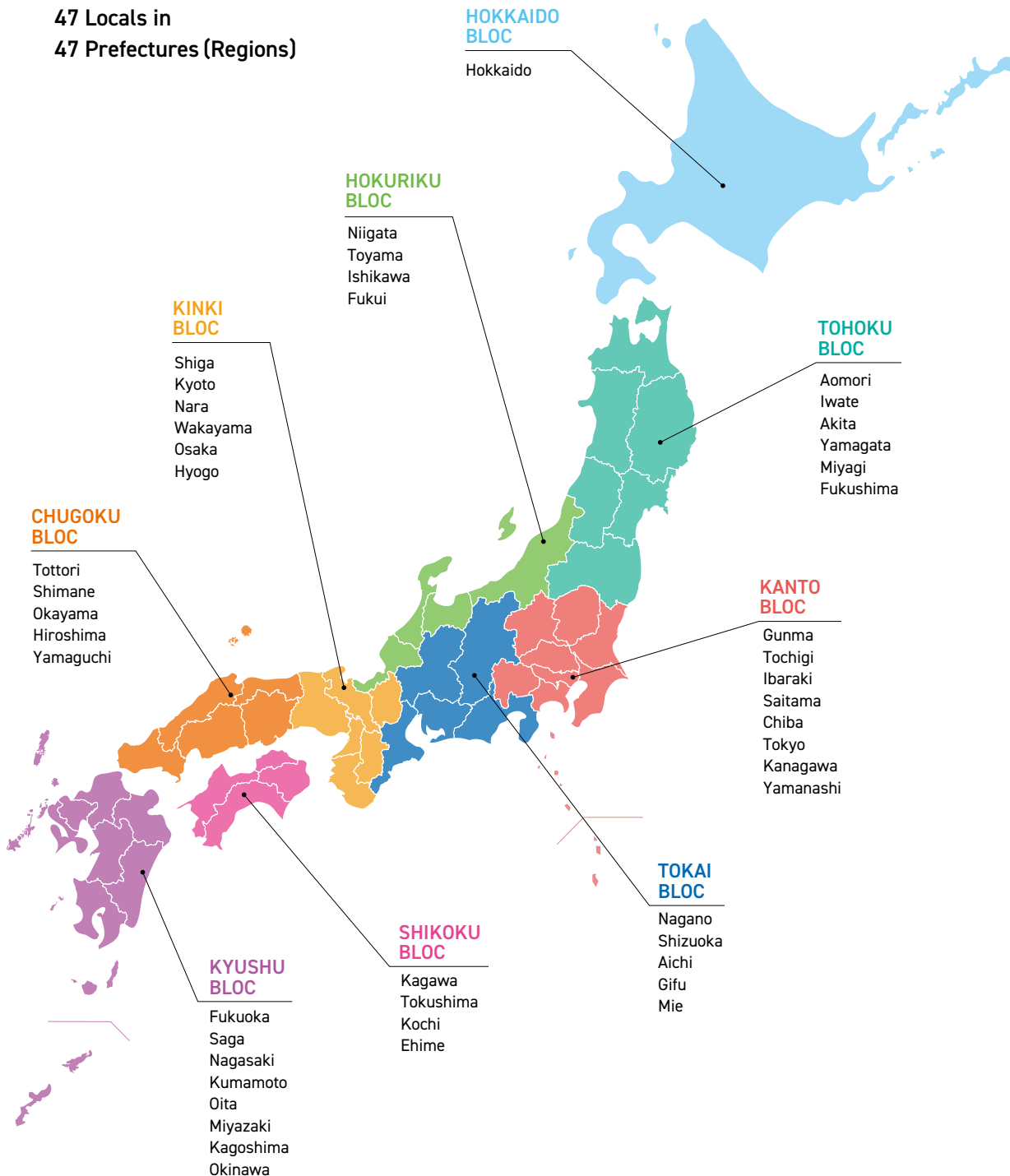
Nagano  
Shizuoka  
Aichi  
Gifu  
Mie

## SHIKOKU BLOC

Kagawa  
Tokushima  
Kochi  
Ehime

## KYUSHU BLOC

Fukuoka  
Saga  
Nagasaki  
Kumamoto  
Oita  
Miyazaki  
Kagoshima  
Okinawa



## Related Organizations

### 連合総研

#### RENGO-RIALS

<English> <https://rengo-soken.or.jp/english/>

RENGO Research Institute for Advancement of Living Standards, the RENGO think-tank, started in December 1987 as the first full-scale research body for the trade union movement.



#### JILAF

<English> <https://www.jilaf.or.jp/English-jilaf/>

Japan International Labour Foundation was established by RENGO in May 1989 as an organization to promote international exchange and cooperation in the field of labour.



#### ILEC

The Institute of Labor Education and Culture is an incorporated association established by RENGO in December 1995 to support workers in their life-long educational cultural activities and contribute to the development of an autonomous and democratic trade union movement.



#### Taishokusha-RENGO

Japanese Confederation of Retired Persons(JCRP), founded in 1991, is tackling various activities for reforming social systems and building a welfare society together with RENGO so that the retired and pensioners can lead bright, delightful and meaningful lives.



#### Chuo-Rofukukyo

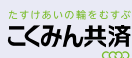
The Central Council of Worker Welfare Associations is a liaison council composed of worker welfare organizations which is run independently in cooperation with trade union organizations and working people. Its aim is to comprehensively promote worker welfare activities.



#### Labour Bank

<English> <https://all.rokin.or.jp/english/index.html>

Labour Banks, started in 1950, are financial cooperatives that cultivate the dreams and ideals of our workers. They consider their objectives to be twofold: to promote economic welfare and the environmental and cultural activities of their members, and create, by working together, a society in which all people can live in happiness.



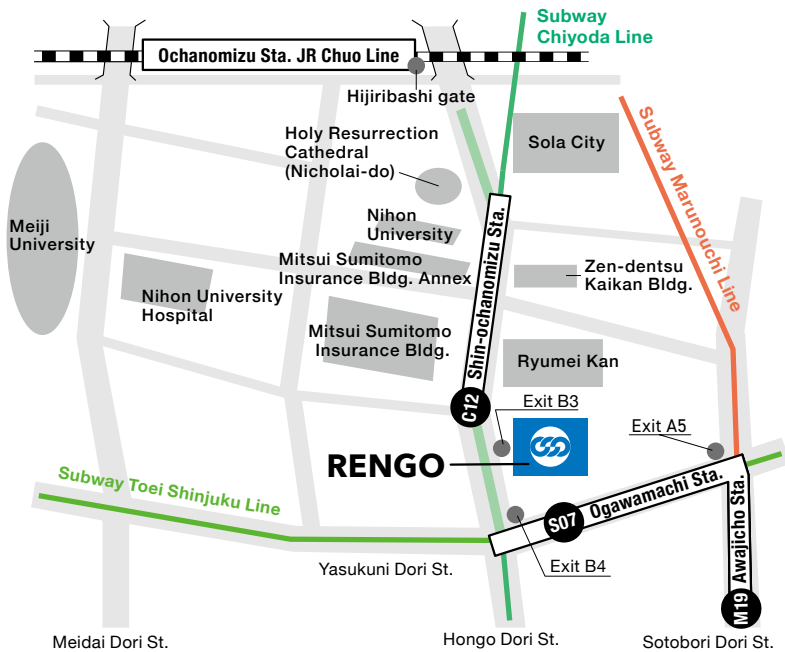
#### Kokumin Kyosai co-op

<English> <https://www.zenrosai.coop/english/english.html>

Kokumin Kyosai co-op stands for the National Federation of Workers and Consumers Kyosai Cooperatives, rebranded from Zenrosai. Based on the cooperative principle, Kokumin Kyosai co-op provides insurance and mutual help for its members. It has been working hand in hand with trade unions for the workers welfare movement, with its service extending to all the workers in the community.

## Access Map

**Address** 3-2-11 Kanda-Surugadai, Chiyoda-ku, Tokyo 101-0062 JAPAN



**RENGO Website (Japanese)**

<https://www.jtuc-rengo.or.jp>



**RENGO Website (English)**

<https://www.jtuc-rengo.org>



**RENGO SNS (Japanese)**

<https://www.jtuc-rengo.or.jp/link>



**RENGO UniBo**

<https://cbgw.kuzen.io/plugins/31897c9f-ce2cd513708326ffd8f302f/def2f8e047610af419576aac52d4e841?id=910354>